



Lovely new forms in *STEUBEN* Glass



These master craftsmen again amaze collectors
with their hand-wrought artistry

A WATER-JAR lamp of sapphire blue . . . pitcher and goblets in the cold blue of moonlight . . . bathroom bottles of amethyst, sunshine yellow, and bubbly Spanish green

—just a few exquisite shapes from the Steuben collection, a rainbow room of glass!

The room is luminous with the glow from lamps of every hue. Flower bowls, filling the tables with promise of future bloom, are like perfect flowers themselves in their fragile beauty.

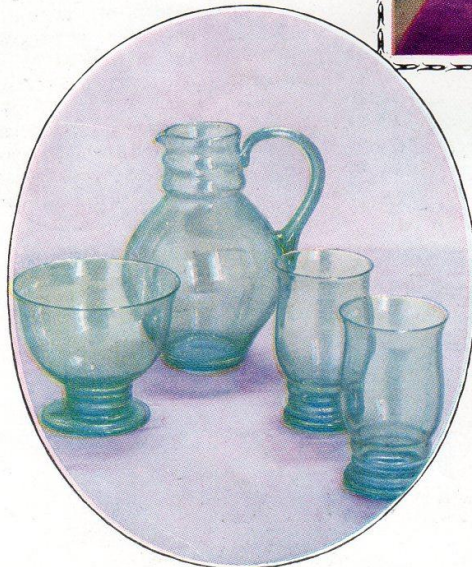
There are plates, candlesticks, compotes and dishes of every description—in rosy grenadine, soft old green, or crystal with black reedings, with plates of flame and onyx black.

Over in the corner you find one of the most fascinating groups—the new bathroom bottles, with bowls for powder and cosmetics, vials for perfumes and scents, in colors to harmonize with the furnishing schemes you work out with your interior decorator.

Every piece in the Steuben collection is designed by an artist glass-maker honored



A lamp made from a water jar of gorgeous blue. Equally fascinating are lamp bowls of ruby red, of amber, Spanish green, or amethyst



Pale rays of moonlight seem to have been imprisoned in the color of this refreshment set made up of quaintly shaped pitcher, tall glasses and a low bowl for flowers or sweetmeats. There also are sets in amber, crystal, grenadine and jade



The new bathroom bottles! Used in sets all of one color or in whatever way your decorative scheme requires

on two continents for his masterly achievements. Under his direction, craftsmen with that rare delicacy and sureness of touch which distinguish the worker in the arts from other men, fashion by hand each lovely piece.

Whatever your choice of Steuben Glass may be—you want them all so much that it is difficult to make a selection—its possession gives you the added

joy of owning something beautifully made by hand.

Steuben Glass is shown in fine china and glassware shops, and in the better department stores everywhere. On each piece perfected by our glass-makers you will find the mark which distinguishes Steuben from other glass—the delicate *fleur de lis*, etched in miniature.

Corning Glass Works, Corning, N. Y.

This device etched in miniature identifies original glass by Steuben